

Warewashing Large drying zone with door for green&clean Dual Rinse Rack Type Dishwasher (Marine)

ITEM # _____

MODEL # _____

NAME # _____

SIS # _____

AIA # _____


535136 (NLDDRE5M)

 Large drying zone with door
for green&clean Dual Rinse
Rack Type Dishwasher, 50Hz
- Marine

535139 (NLDDRE6M)

 Large drying zone with door
for green&clean Dual Rinse
Rack Type Dishwasher, 60Hz
- Marine

Short Form Specification

Item No. _____

Unit to be large dryer suitable to be installed with green&clean dual rinse rack type dishwasher. Dryer uses internal and external air to provide good drying result without high energy consumption. Insulated door with easy access for silent operation and heat preservation. Construction in AISI 304 stainless steel. Suitable for any feeding direction of the dishwasher thanks to easy reversibility on-site. Full pre-arrangement to be connected with green&clean dual rinse rack type dishwasher without any modification.

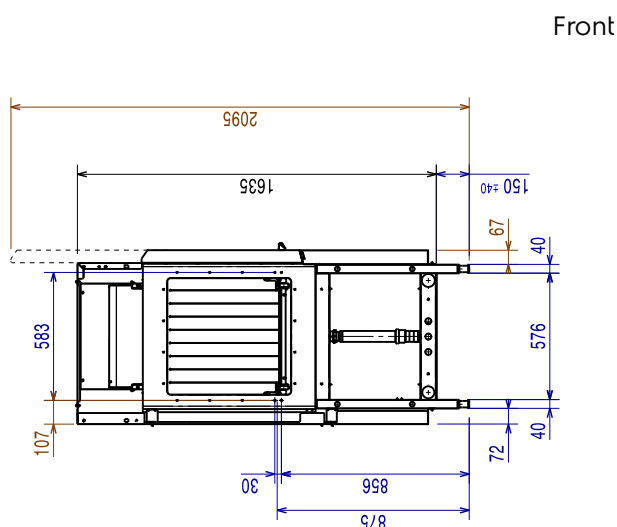
Main Features

- Adjustable feet for full access underneath the machine for cleaning.
- Electronically controlled to optimize drying results.
- Drying zone removes most of water from the crockery through a high powered fan that extracts dry air from outside mixing it with the internal air, thus providing dry plates at a temperature cool enough to handle safely.
- IP25 protection against water jets, solid objects and small animals (larger than 6 mm).
- The feeding direction can be either left to right or right to left as it's reversible on site.
- Large counter balanced inspection door allows unrestricted all-round access to the internal area. Door is insulated with injected foam. This adds strength as well as reduces noise and heat loss.
- Unit to be placed between dual rinse rack type dishwasher and handling system.

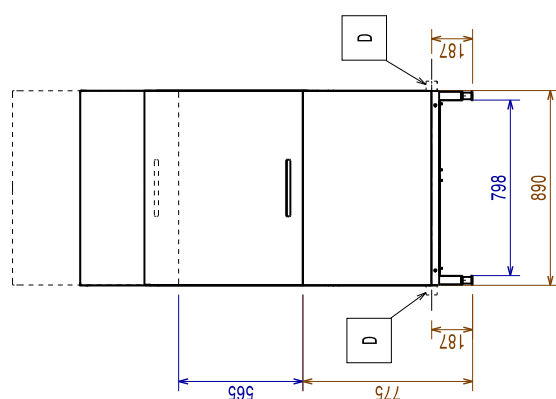
Construction

- The chamber is pressed with fully rounded corners without internal pipes and therefore no hidden dirt traps.
- All main components made in heavy duty anti-corrosive 304 type stainless steel: internal chamber, external, front and side panels, door and rack transportation system.
- The unit is built on modularity concept to easily connect with dual rinse rack type dishwasher without any modification including power, inlet water, drain water, detergent and rinse aid connections.

APPROVAL: _____

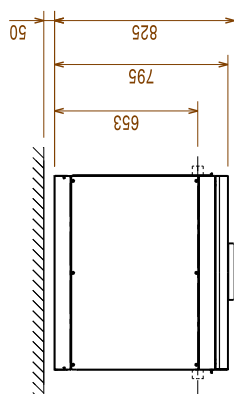


Front



Side

- D = Drain
EI = Electrical inlet (power)
EO = Electrical Outlet
EQ = Equipotential screw
ES = Electrical signal IN/OUT
U = USB port



Top

Electric

Dryer heating elements:

535136 (NLDDRE5M) 8.25kW

Supply voltage:

535136 (NLDDRE5M)	400 V/3 ph/50 Hz
535139 (NLDDRE6M)	440 V/3 ph/60 Hz

Default Installed Power:

Drying fan power:

Drying fan power:

535136 (NLDDRE5M)	0.19kW
-------------------	--------

Key Information:

Dryer air flow:

535136 (NLDDRE5M) 750m3/h

Dryer air temperature:

535136 (NLDDRE5M) 70°C

For transportation purpose only, the depth can be reduced to 795mm by removing the door handle.

Reference norm used to measure the noise:
IEC60335-2-58 annex AA.

External dimensions, Width: 890 mm

External dimensions, Depth: 825 mm

External dimensions, Height: 1785 mm

Net weight: 116 kg

Shipping weight: 139 kg

Shipping height:

535136 (NLDDRE5M) 2030 mm

535139 (NLDDRE6M)	2025 mm
-------------------	---------

Shipping width: 910 mm

Shipping depth:

535136 (NLDDRE5M) 1030 mm

535139 (NLDDRE6M)	1025 mm
-------------------	---------

Shipping volume:

535136 (NLDDRE5M) 1.9 m³535139 (NLDDRE6M) 1.89 m³

Sustainability

Noise level: <62 dBA